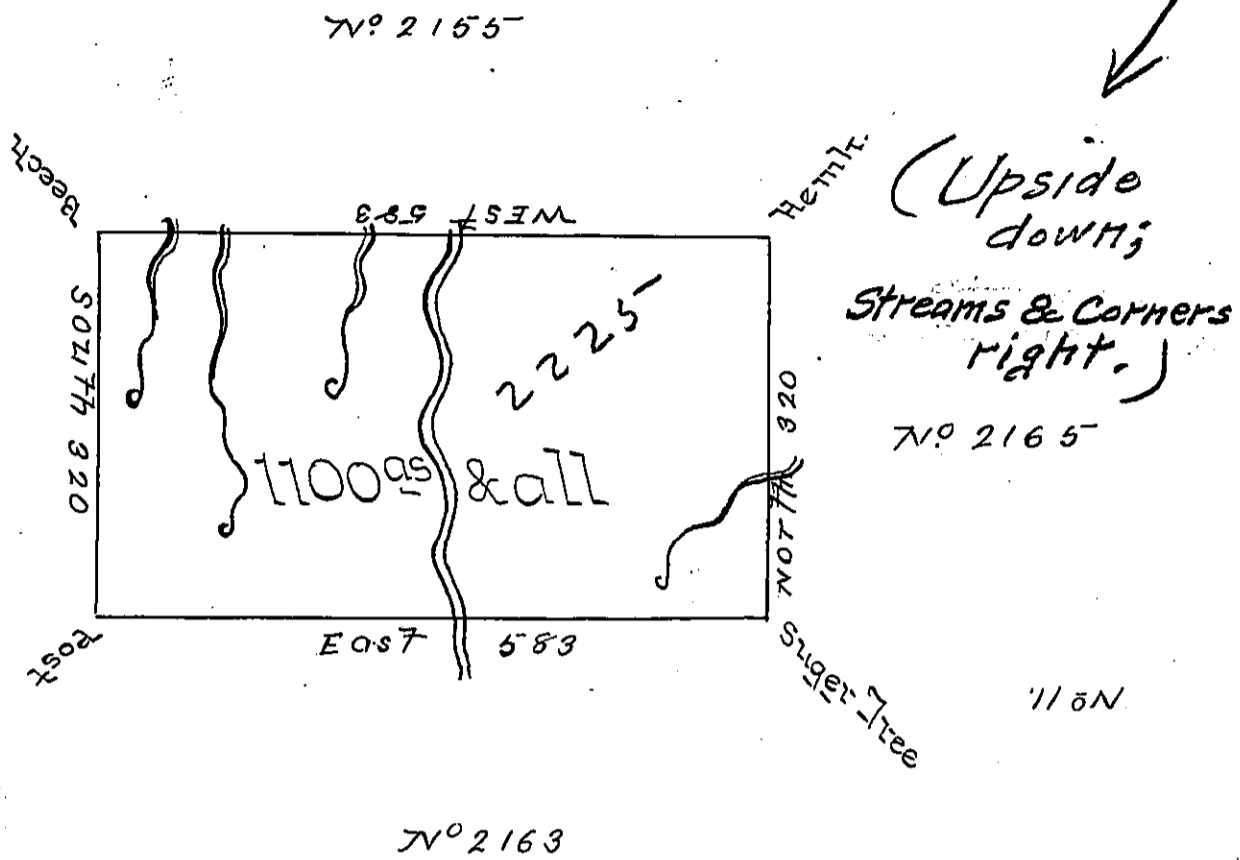


N^o 2166



Situate one Mile South of the Allegheny River and four Miles East of the Portage Branch of Allegheny in North County containing 1100^{as} and the usual allowance for Roads &c s. Surveyed June 5th 1793 for Robert Gilmore in pursuance of a Warrant N^o 2225 bearing date the 12th December 1792

John Canan

Daniel Brodhead Esq: S. G.

IN TESTIMONY that the above is a copy of the original remaining on file in the Department of Internal Affairs of Pennsylvania, made conformably to an Act of Assembly approved the 16th day of February, 1833, I have hereunto set my Hand and caused the Seal of said Department to be affixed at Harrisburg, this first day of November 1898.

James W. Latta
Secretary of Internal Affairs.